



THE MEDIAN
RESIDENCES

**EGYGAB Presents
The Median Residences**

New Cairo.

DESIGN

HERE

LUXURY

MODERN

STYLE

PRICE

ART

SOMEWHERE IN
BETWEEN.

DESIGN

FUNCTION

THERE

REALITY

CLASSIC

COMFORT

WORTH

What if you were told that there is one destination,

that bridges the gap between

dreams and captivating reality straight in the heart of everything?

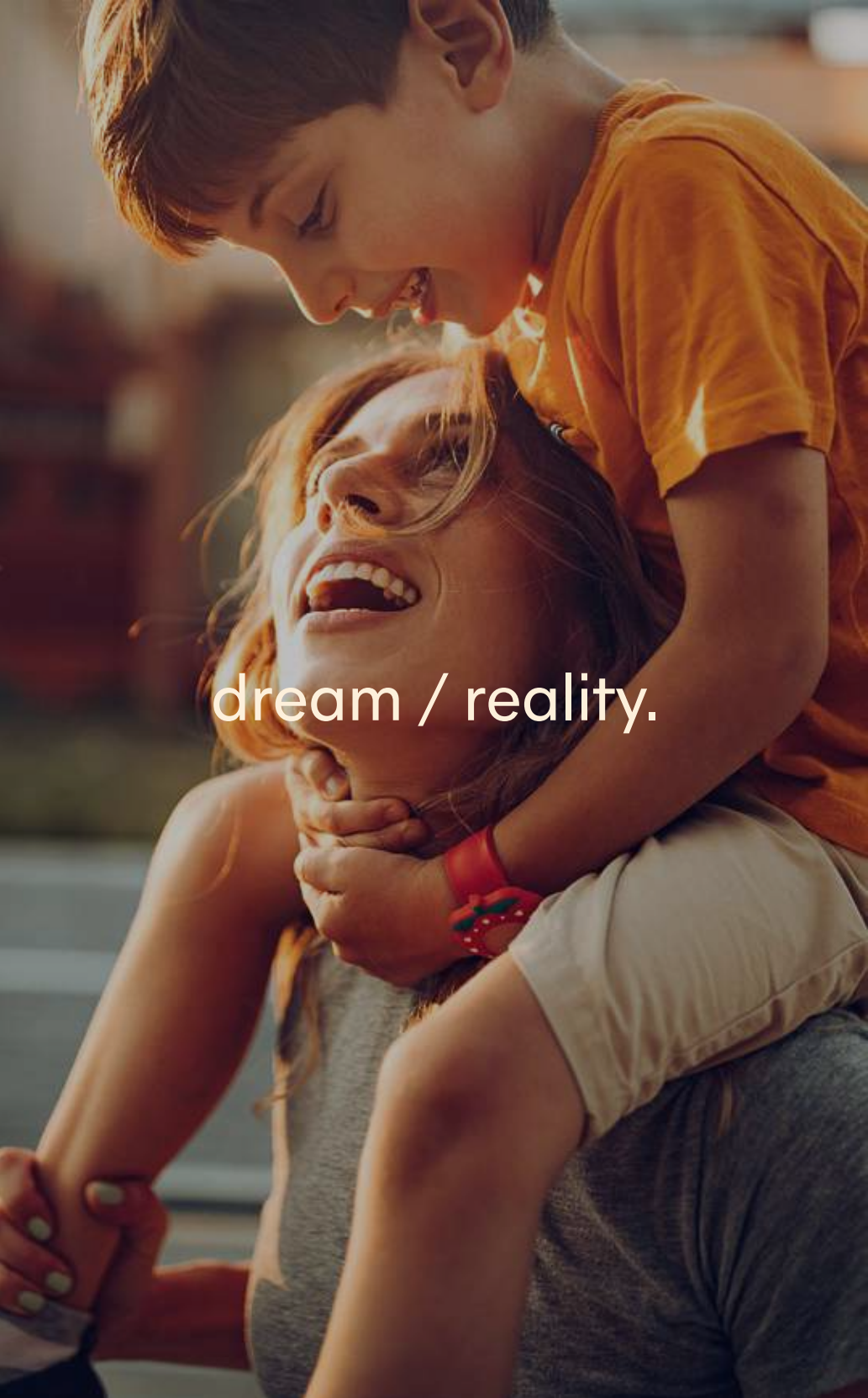




mind / soul.

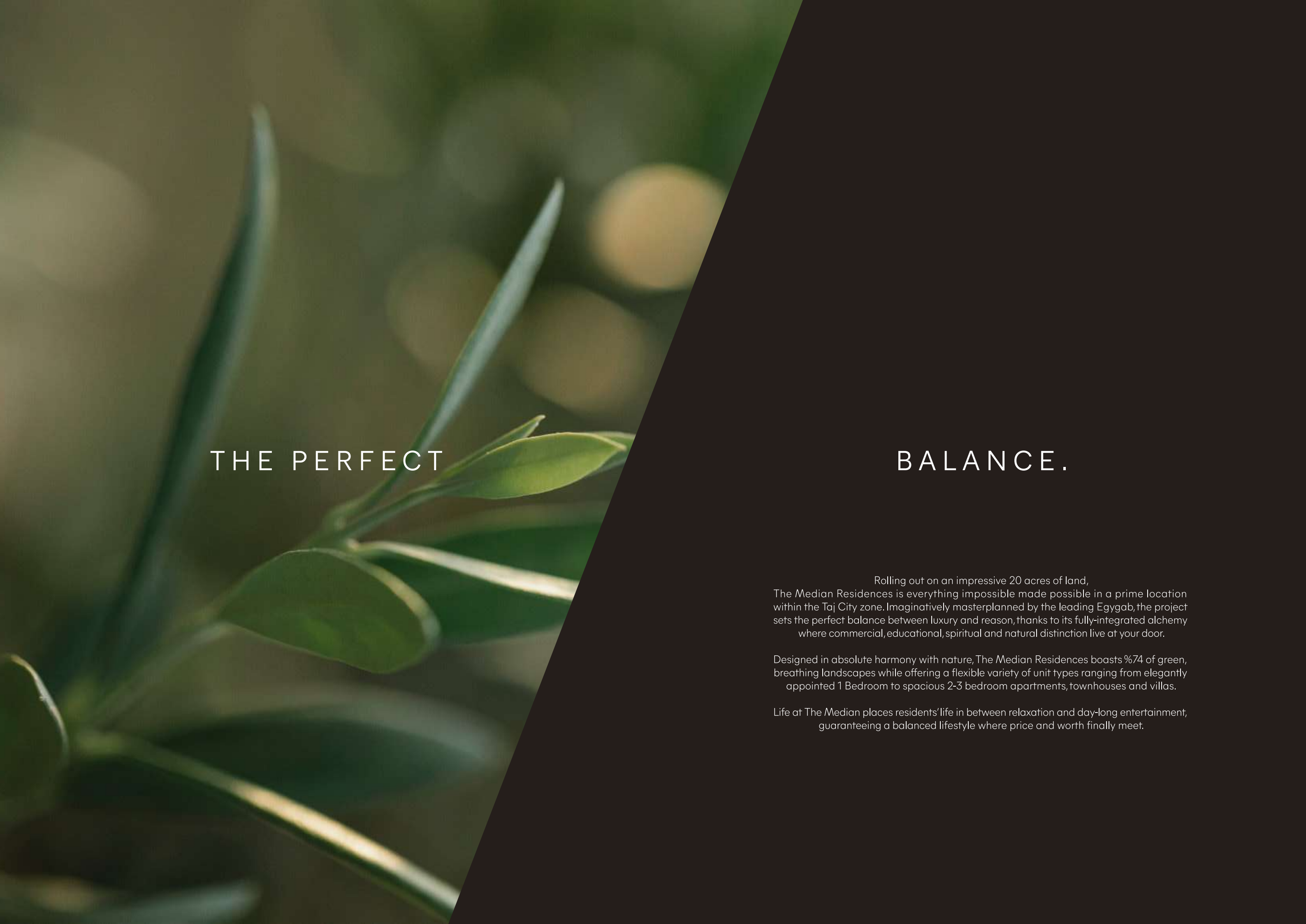


quiet / lively.



dream / reality.

**A comprehensive destination
somewhere in between.**



THE PERFECT

BALANCE.

Rolling out on an impressive 20 acres of land, The Median Residences is everything impossible made possible in a prime location within the Taj City zone. Imaginatively masterplanned by the leading Ezygab, the project sets the perfect balance between luxury and reason, thanks to its fully-integrated alchemy where commercial, educational, spiritual and natural distinction live at your door.

Designed in absolute harmony with nature, The Median Residences boasts %74 of green, breathing landscapes while offering a flexible variety of unit types ranging from elegantly appointed 1 Bedroom to spacious 2-3 bedroom apartments, townhouses and villas.

Life at The Median places residents' life in between relaxation and day-long entertainment, guaranteeing a balanced lifestyle where price and worth finally meet.

A Prime Location



The Median Residences is ideally enjoying a prime location between the Ring Road and Suez Road. The project has been carefully planned with residents' convenience in mind, only few minutes away from New Cairo, Heliopolis and Nasr City.

**An accessible Median
between here and there.**



A LIVELY

MEDIAN.

Living at The Median Residences is enjoying every minute of every day without having to leave the community. The project surrounds its community with a state-of-the-art mall, an elegantly appointed social club and a nursery for quality education. Ideal for young families and couples alike, The Median Residences offers triple play and smart homes and safe kids areas & fun playgrounds for the little ones, a state-of-the-art mosque, as well as large bicycle tracks to keep everyone energized.

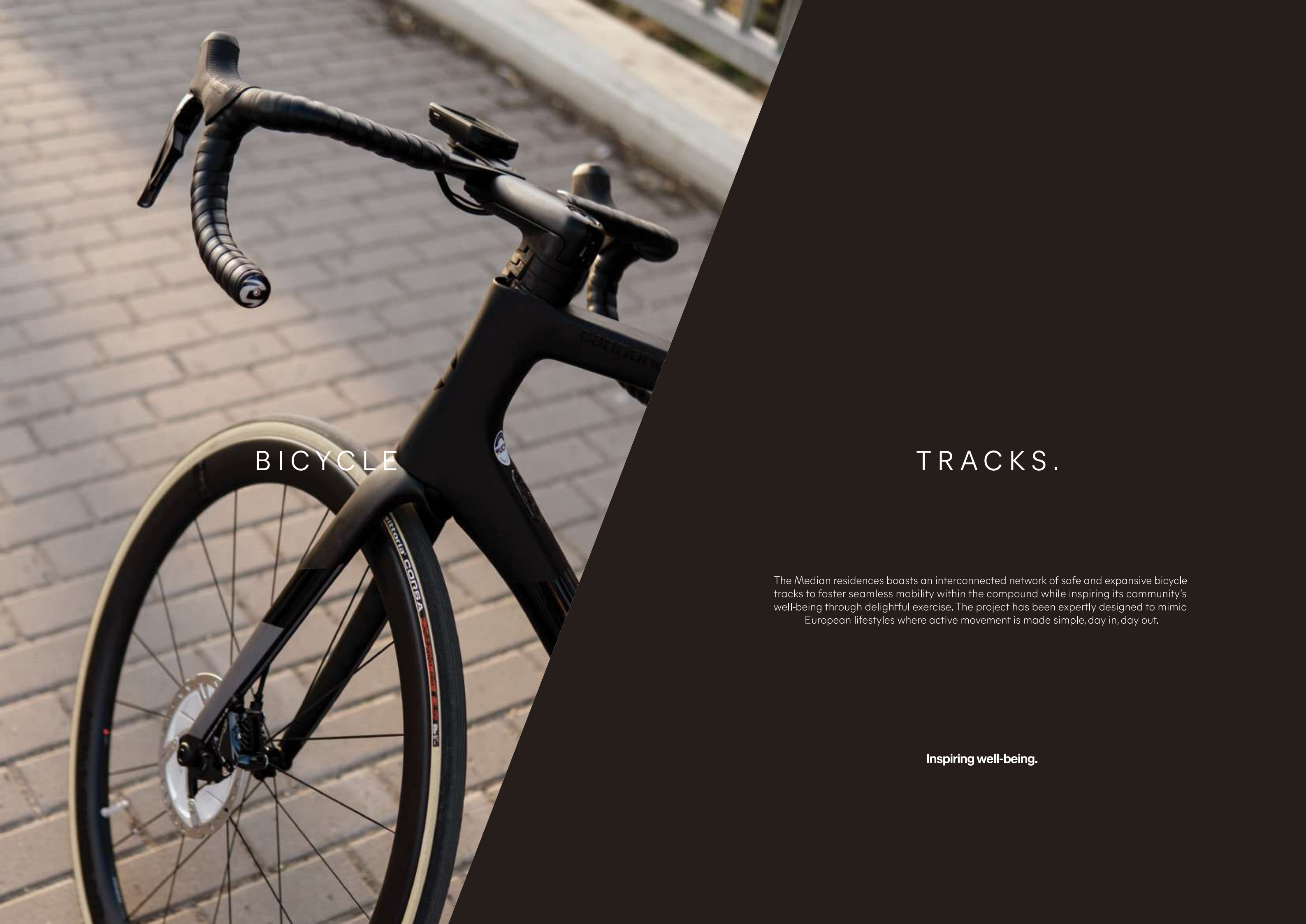


KIDS

AREA.

Living at The Median Residences is enjoying every minute of every day without having to leave the community. The project surrounds its community with a state-of-the-art mall, an elegantly appointed social club and a nursery for quality education. Ideal for young families and couples alike, The Median Residences offers triple play and smart homes and safe kids areas & fun playgrounds for the little ones, a state-of-the-art mosque, as well as large bicycle tracks to keep everyone energized.

Fostering fun development.



BICYCLE

TRACKS.

The Median residences boasts an interconnected network of safe and expansive bicycle tracks to foster seamless mobility within the compound while inspiring its community's well-being through delightful exercise. The project has been expertly designed to mimic European lifestyles where active movement is made simple, day in, day out.

Inspiring well-being.



THE FUTURE

IS SMART.

The Median Residences offers its community the latest in advanced technology, backed-up by triple play. Residents can enjoy accelerated productivity and entertainment by activating internet service, television, and fixed phone using optical fibers of the highest standards. The Median Residences values its community's convenience and utmost comfort. Therefore, all homes adopt smart living features from controlling lighting and temperature remotely with one click on their smart device to setting the overall mood of their ambience to enjoy a customized living experience.

Fostering fun development.



SOCIAL

CLUB.

The Median Residences Social Club is a lively destination at your door, inviting every lifestyle to belong and enjoy. The Median Residences offers a community center and 2 social clubs offering an abundant variety of activities and basic essentials, powered by impeccable service to transform every day into a treasured memory.

For daily amusement.



AN ICONIC

MALL.

The Median Residences Mall is an iconic shopping destination, offering the community direct access to the mall, as well as all their needs in one place. From top-class brands and retail luxuries to indulgent dining experiences and non-stop entertainment, the mall is a lively destination inviting the community to enjoy.

For a unique shopping experience.



TOP-CLASS

NURSERY.

The Median residences puts convenience at the forefront of its masterplan. Therefore, the development offers a state-of-the-art nursery at your door to ensure kids learn in engaging settings while benefiting from top-class education, thanks to professional tutors in every discipline.

For quality education.

- 3 Swimming Pools
- 2 Social Clubs
- Bicycle Tracks
- Kids Area
- Nursery
- Mosque
- Gym



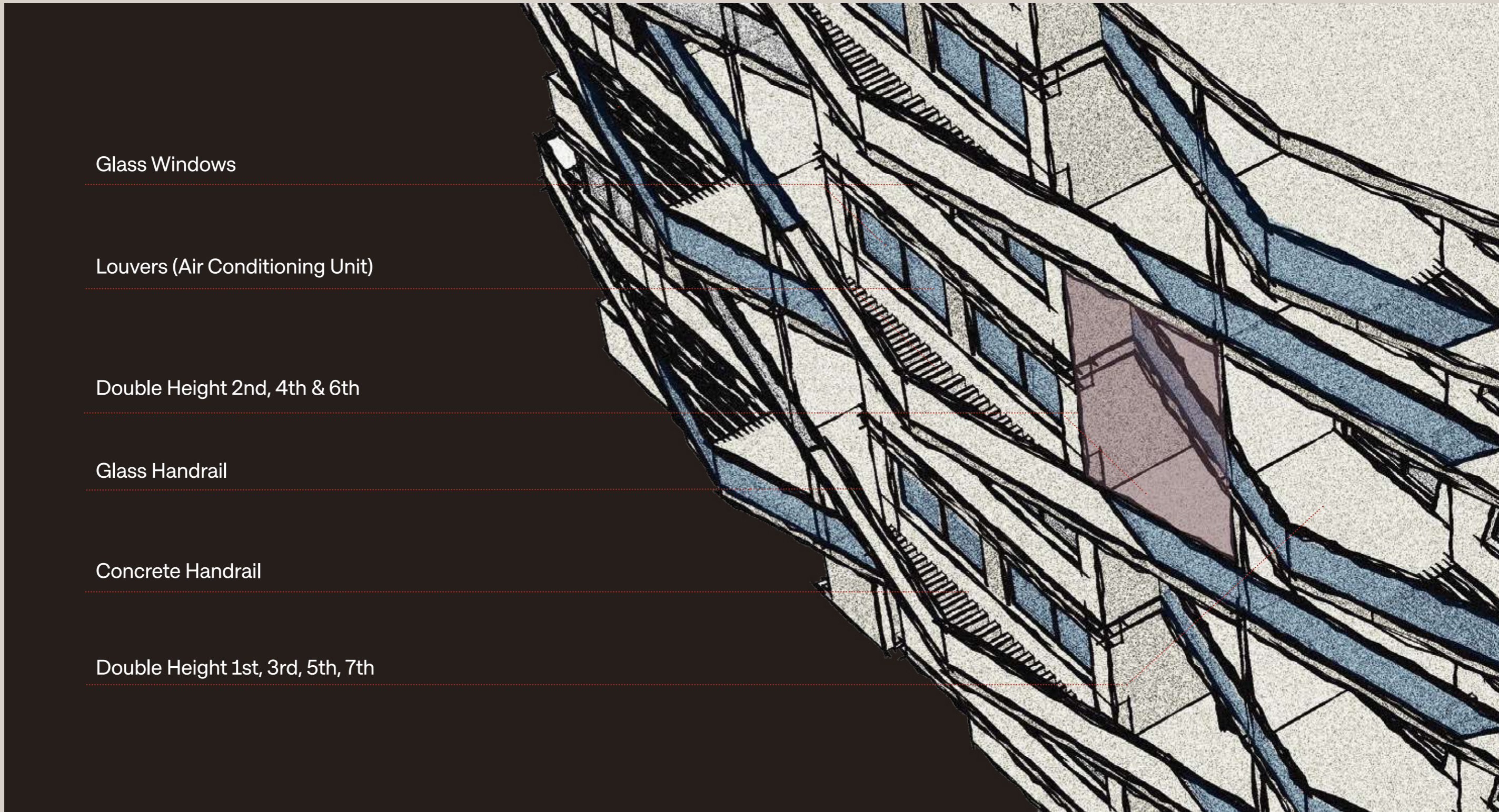
Sleek, contemporary and more than meets the eye, The Median Residences sets new standards in artful living. The project puts emphasis on broad, expansive streets accommodating 1,200m² of flowing lakes and breathtaking gardens to inspire its community's wellbeing in every direction. Homes at The Median Residences are a modern interpretation of unique elegance and streamlined functionality where space and views smartly intertwine.

**An inspiring Median
between art & design.**

/
PROTOTYPES.
Apartments







Glass Windows

Louvers (Air Conditioning Unit)

Double Height 2nd, 4th & 6th

Glass Handrail

Concrete Handrail

Double Height 1st, 3rd, 5th, 7th

Maximized Views and Circulation For All Residents

The Median residences adopts a unique triangular architecture across all building designs to grant most of units infinite views on green open landscapes. To ensure residents enjoy a cool breeze year-round, each building boasts its own court, allowing the air to freely circulate, irrespective of the unit's orientation -North or South.

Optimized space

For a breathing living experience.

Unit types

The Median residences' apartment layout focuses on optimizing the interiors while maximizing outdoor terraces for an airy living experience. Most of the units enjoy double height ceilings to increase space perception from every point.

**An inspiring Median
between art & design.**



1 Bedroom.

Type 1

Ground Floor	76 m ²	Garden Area	27 m ²
--------------	-------------------	-------------	-------------------

1. Master Bedroom	3.60 x 3.80 m ²
2. Master Bathroom	1.60 x 2.20 m ²
3. Toilet	1.30 x 1.50 m ²
4. Dining & Reception	3.60 x 6.80 m ²
5. Terrace	1.20 x 3.50 m ²



1- All rooms' dimensions are measured to structure elements and exclude wall finishes and construction tolerances. 2-Actual areas may vary from the scaled areas. 3-Units and gardens dimensions and drawings are approximate information may subject to change. 4-during construction works. 5-Actual units areas, front windows, porches and terraces may vary by elevations styles.

1 Bedroom.

Type 2

Typical Floor	82m ²
---------------	------------------

1. Master Bedroom	3.60 x 3.80 m ²
2. Master Bathroom	1.60 x 2.20 m ²
3. Toilet	1.30 x 1.50 m ²
4. Dining & Reception	3.60 x 6.80 m ²
5. Terrace	2.50 x 3.60 m ²



1- All rooms' dimensions are measured to structure elements and exclude wall finishes and construction tolerances. 2-Actual areas may vary from the scaled areas. 3-Units and gardens dimensions and drawings are approximate information may subject to change. 4-during construction works. 5-Actual units areas, front windows, porches and terraces may vary by elevations styles.

1 Bedroom.

Type 3

Typical Floor	78m ²
---------------	------------------

1. Master Bedroom	3.60 x 3.80 m ²
2. Master Bathroom	1.60 x 2.20 m ²
3. Toilet	1.30 x 1.50 m ²
4. Dining & Reception	3.60 x 6.80 m ²
5. Terrace	2.00 x 3.50 m ²



1- All rooms' dimensions are measured to structure elements and exclude wall finishes and construction tolerances. 2-Actual areas may vary from the scaled areas. 3-Units and gardens dimensions and drawings are approximate information may subject to change. 4-during construction works. 5-Actual units areas, front windows, porches and terraces may vary by elevations styles.

2 Bedrooms.

Type 1

Ground Floor	122m ²	Garden	140m ²
--------------	-------------------	--------	-------------------

1. Bedroom 1	3.60 x 3.80 m ²
2. Bedroom 2	3.60 x 3.80 m ²
3. Bathroom	1.60 x 2.30 m ²
4. Dining & Reception	4.10 x 7.30 m ²
5. Kitchen	2.70 x 3.60 m ²
6. Toilet	1.20 x 2.70 m ²
7. Corridor	1.10 x 5.00 m ²
8. Terrace	1.20 x 3.90 m ²



1- All rooms' dimensions are measured to structure elements and exclude wall finishes and construction tolerances. 2-Actual areas may vary from the scaled areas. 3-Units and gardens dimensions and drawings are approximate information may subject to change. 4-during construction works. 5-Actual units areas, front windows, porches and terraces may vary by elevations styles.

2 Bedrooms.

Type 2

Ground Floor	112 m ²	Garden Area	48m ²
--------------	--------------------	-------------	------------------

1. Bedroom 1	3.60 x 3.60 m ²
2. Bedroom 2	3.60 x 3.60 m ²
3. Bathroom	1.60 x 2.40 m ²
4. Dining & Reception	4.10 x 7.30 m ²
5. Toilet	1.20x 2.40 m ²
6. Kitchen	1.80 x 2.40 m ²
7. Corridor	1.10 x 5.00 m ²
8. Terrace	1.20 x 4.00 m ²



1- All rooms' dimensions are measured to structure elements and exclude wall finishes and construction tolerances. 2-Actual areas may vary from the scaled areas. 3-Units and gardens dimensions and drawings are approximate information may subject to change. 4-during construction works. 5-Actual units areas, front windows, porches and terraces may vary by elevations styles.

2 Bedrooms.

Type 3

Typical Floor	127m ²
---------------	-------------------

1. Bedroom 1	3.60 x 3.80 m ²
2. Bedroom 2	3.60 x 3.80 m ²
3. Bathroom	1.60 x 2.30 m ²
4. Dining & Reception	4.10 x 7.30 m ²
5. Toilet	1.20x 2.70 m ²
6. Kitchen	2.70 x 3.60 m ²
7. Corridor	1.10 x 5.00 m ²
8. Terrace	2.50 x 3.90 m ²



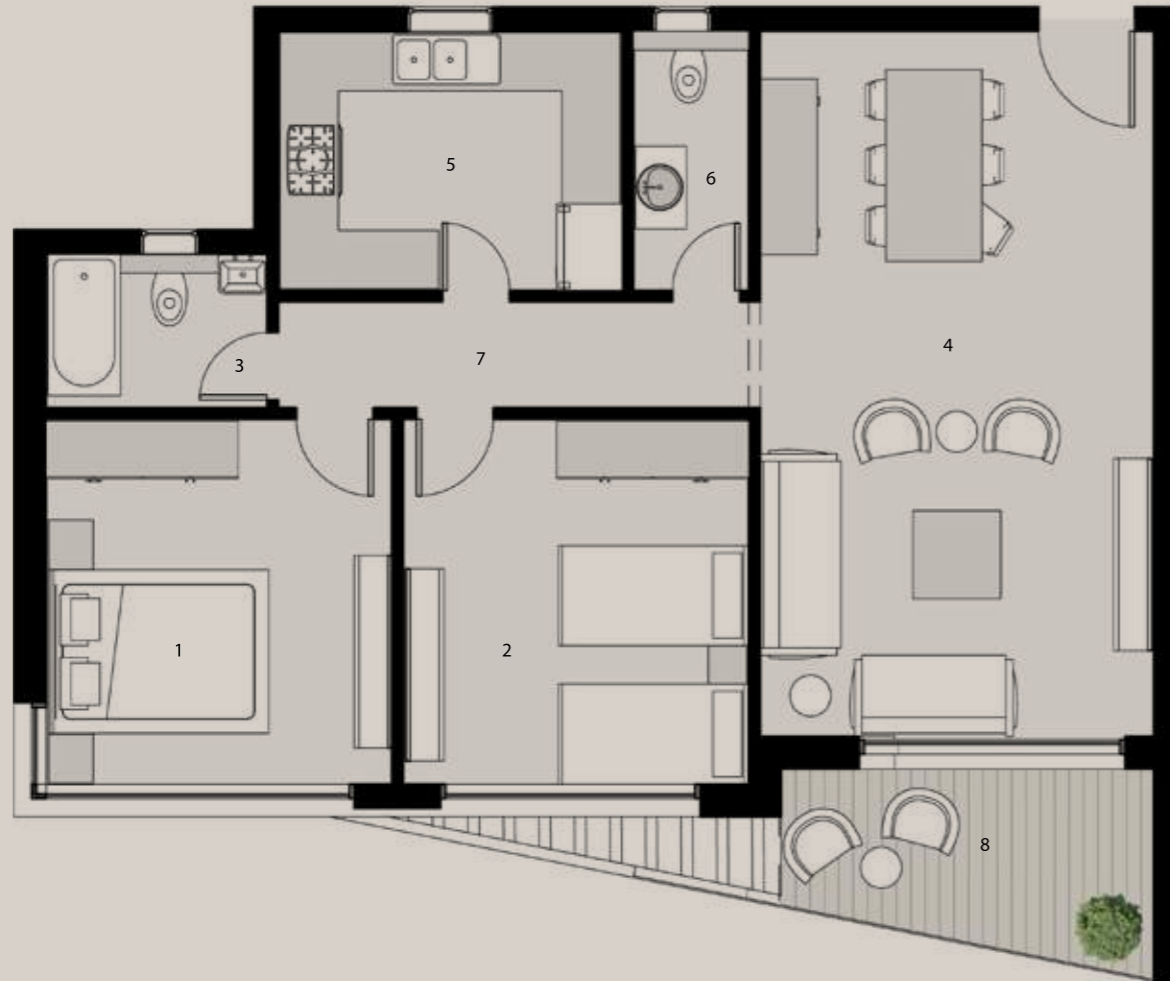
1- All rooms' dimensions are measured to structure elements and exclude wall finishes and construction tolerances. 2-Actual areas may vary from the scaled areas. 3-Units and gardens dimensions and drawings are approximate information may subject to change. 4-during construction works. 5-Actual units areas, front windows, porches and terraces may vary by elevations styles.

2 Bedrooms.

Type 4

Typical Floor	123m ²
---------------	-------------------

1. Bedroom 1	3.60 x 3.80 m ²
2. Bedroom 2	3.60 x 3.80 m ²
3. Bathroom	1.60 x 2.30 m ²
4. Dining & Reception	4.10 x 7.30 m ²
5. Toilet	1.20 x 2.70 m ²
6. Kitchen	2.70 x 3.60 m ²
7. Corridor	1.10 x 5.00 m ²
8. Terrace	1.80 x 3.90 m ²



1- All rooms' dimensions are measured to structure elements and exclude wall finishes and construction tolerances. 2-Actual areas may vary from the scaled areas. 3-Units and gardens dimensions and drawings are approximate information may subject to change. 4-during construction works. 5-Actual units areas, front windows, porches and terraces may vary by elevations styles.

3 Bedrooms.

Type 1

Ground Floor	161m ²	Garden	67m ²
--------------	-------------------	--------	------------------

1. Master Bedroom	3.60 x 5.00 m ²
2. Master Bathroom	1.60 x 3.10 m ²
3. Dressing	1.60 x 1.60 m ²
4. Bedroom	3.60 x 3.60 m ²
5. Bedroom	3.60 x 3.60 m ²
6. Bathroom	1.60 x 2.40 m ²
7. Dining & Reception	4.10 x 7.30 m ²
8. Toilet	1.20 x 2.10 m ²
9. Kitchen	2.40 x 3.00 m ²
10. Corridor	1.10 x 5.80 m ²
11. Terrace	1.20 x 4.00 m ²
12. Terrace	1.20 x 3.50 m ²



1- All rooms' dimensions are measured to structure elements and exclude wall finishes and construction tolerances. 2-Actual areas may vary from the scaled areas. 3-Units and gardens dimensions and drawings are approximate information may subject to change. 4-during construction works. 5-Actual units areas, front windows, porches and terraces may vary by elevations styles.

3 Bedrooms.

Type 2

Ground Floor	140m ²	Garden	88m ²
--------------	-------------------	--------	------------------

1. Master Bedroom	3.80 x 3.90 m ²
2. Bathroom	1.70 x 2.70 m ²
3. Bedroom	3.60 x 3.60 m ²
4. Bedroom	3.60 x 3.80 m ²
5. Toilet	1.20 x 2.70 m ²
6. Dining & Reception	4.10 x 7.30 m ²
7. Kitchen	2.40 x 2.70 m ²
8. Corridor	1.10 x 5.00 m ²
9. Terrace	1.20 x 3.90 m ²



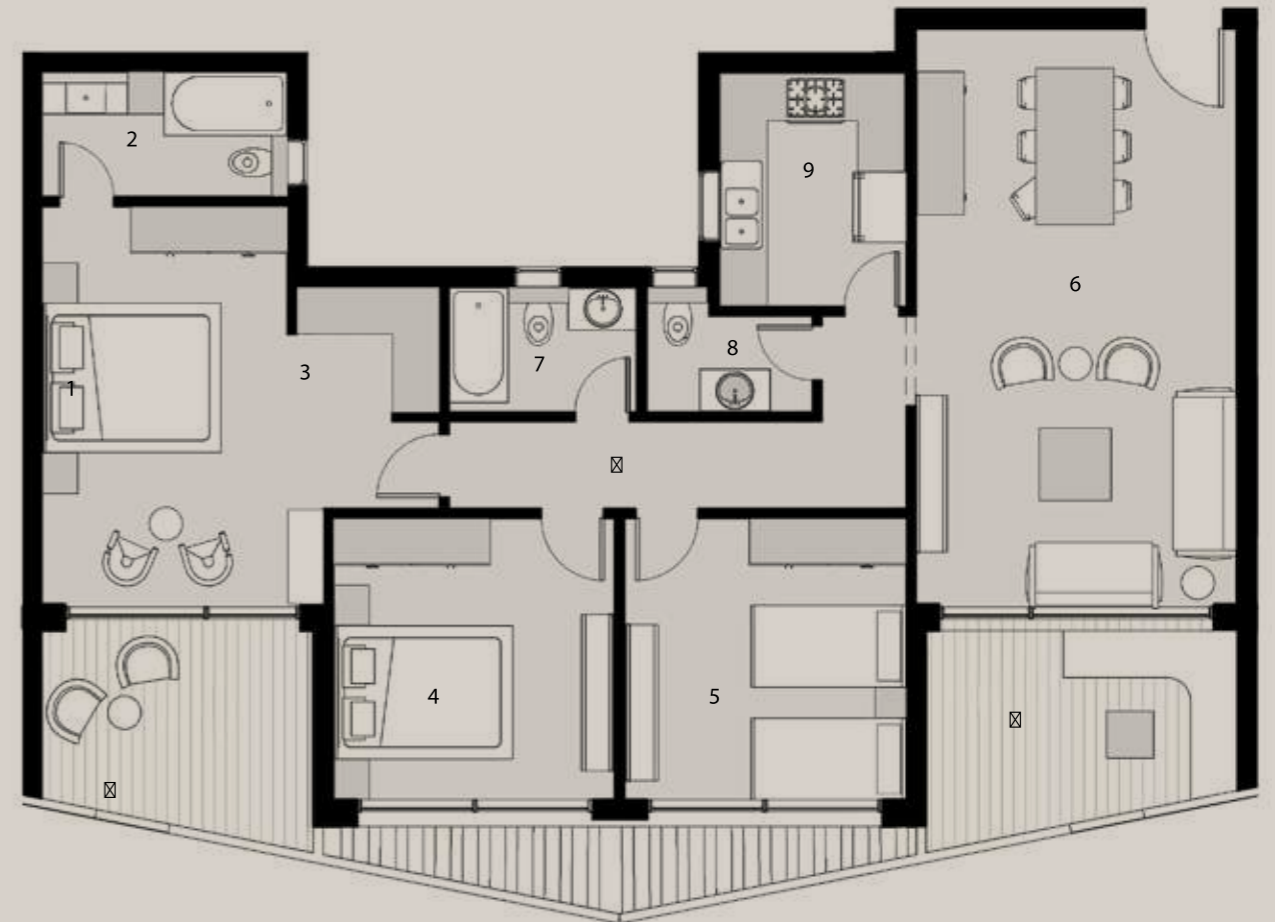
1- All rooms' dimensions are measured to structure elements and exclude wall finishes and construction tolerances. 2-Actual areas may vary from the scaled areas. 3-Units and gardens dimensions and drawings are approximate information may subject to change. 4-during construction works. 5-Actual units areas, front windows, porches and terraces may vary by elevations styles.

3 Bedrooms.

Type 3

Typical Floor	174m ²
---------------	-------------------

1. Master Bedroom	3.60 x 5.00 m ²
2. Master Bathroom	1.60 x 3.10 m ²
3. Dressing	1.60 x 1.60 m ²
4. Bedroom	3.60 x 3.60 m ²
5. Bedroom	3.60 x 3.60 m ²
6. Dining & Reception	4.10 x 7.30 m ²
7. Bathroom	1.60 x 2.40 m ²
8. Toilet	1.20 x 2.10 m ²
9. Kitchen	2.40 x 3.00 m ²
10. Corridor	1.10 x 5.00 m ²
11. Terrace	2.20 x 4.00 m ²
12. Terrace	2.20 x 3.50 m ²



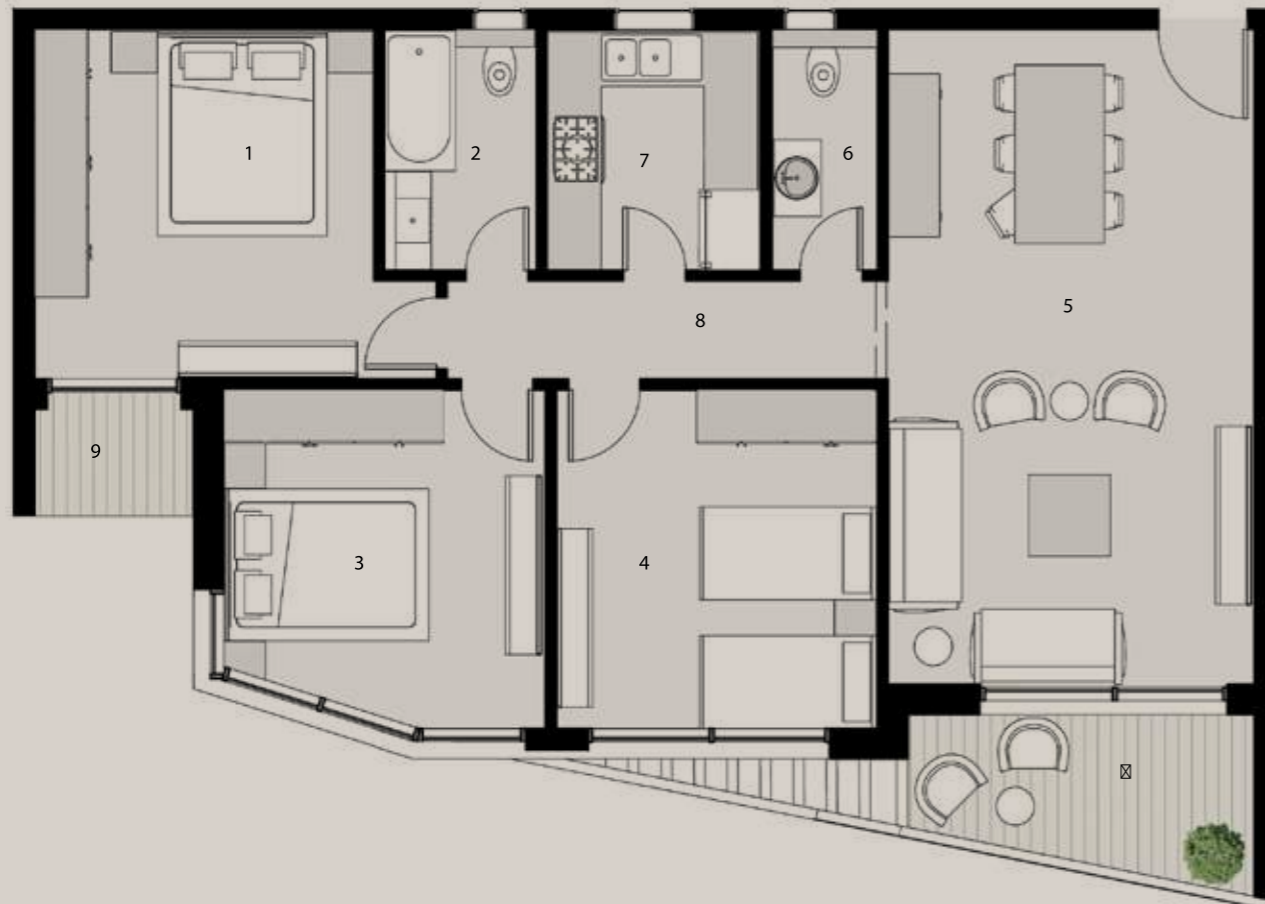
1- All rooms' dimensions are measured to structure elements and exclude wall finishes and construction tolerances. 2-Actual areas may vary from the scaled areas. 3-Units and gardens dimensions and drawings are approximate information may subject to change. 4-during construction works. 5-Actual units areas, front windows, porches and terraces may vary by elevations styles.

3 Bedrooms.

Type 4

Typical Floor	144m ²
---------------	-------------------

1. Master Bedroom	3.80 x 3.90 m ²
2. Bathroom	1.70 x 2.70 m ²
3. Bedroom	3.60 x 3.60 m ²
4. Bedroom	3.60 x 3.80 m ²
5. Dining & Reception	4.10 x 7.30 m ²
6. Toilet	1.20 x 2.70 m ²
7. Kitchen	2.40 x 2.70 m ²
8. Corridor	1.10 x 4.90 m ²
9. Terrace	1.20 x 1.80 m ²
10. Terrace	1.80 x 3.90 m ²



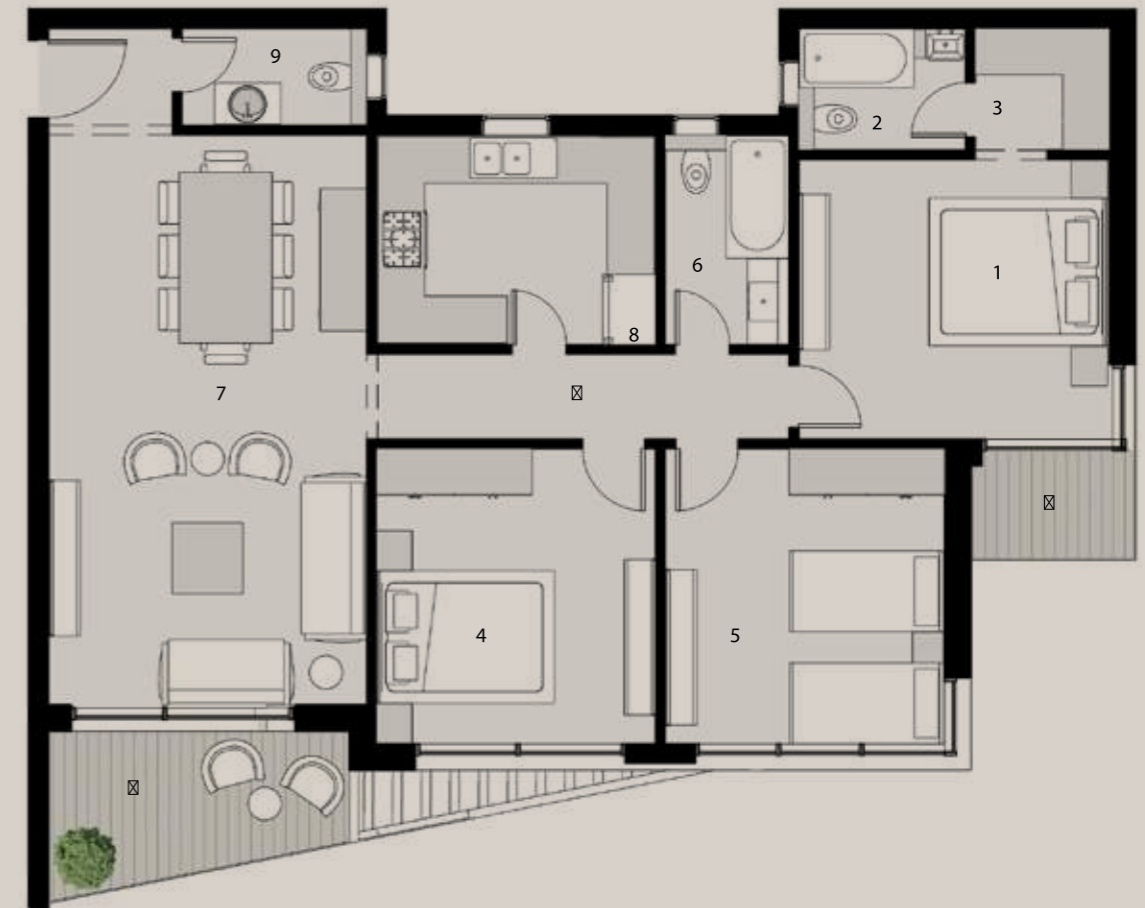
1- All rooms' dimensions are measured to structure elements and exclude wall finishes and construction tolerances. 2-Actual areas may vary from the scaled areas. 3-Units and gardens dimensions and drawings are approximate information may subject to change. 4-during construction works. 5-Actual units areas, front windows, porches and terraces may vary by elevations styles.

3 Bedrooms.

Type 5

Typical Floor	160m ²
---------------	-------------------

1. Master Bedroom	3.60 x 4.00 m ²
2. Master Bathroom	1.60 x 2.15 m ²
3. Dressing	1.60 x 1.70 m ²
4. Bedroom	3.60 x 3.80 m ²
5. Bedroom	3.60 x 3.80 m ²
6. Bathroom	1.60 x 2.70 m ²
7. Dining & Reception	4.10 x 7.30 m ²
8. Toilet	1.25 x 2.40 m ²
9. Kitchen	2.70 x 3.60 m ²
10. Corridor	1.10 x 5.40 m ²
11. Terrace	1.80 x 3.90 m ²
12. Terrace	1.20 x 2.00 m ²



1- All rooms' dimensions are measured to structure elements and exclude wall finishes and construction tolerances. 2-Actual areas may vary from the scaled areas. 3-Units and gardens dimensions and drawings are approximate information may subject to change. 4-during construction works. 5-Actual units areas, front windows, porches and terraces may vary by elevations styles.

/
PROTOTYPES.
Eden Villas









Engineering Section



Eden Villas.

Ground Villa

Villa 1	176m ²	Garden	47m ²
---------	-------------------	--------	------------------



Entrance Floor

Upper Floor

1- All rooms' dimensions are measured to structure elements and exclude wall finishes and construction tolerances. 2-Actual areas may vary from the scaled areas. 3-Units and gardens dimensions and drawings are approximate information may subject to change. 4-during construction works. 5-Actual units areas, front windows, porches and terraces may vary by elevations styles.

Eden Villas.

Ground Villa

Villa 2	189m ²	Garden	53m ²
---------	-------------------	--------	------------------



Entrance Floor

Upper Floor

1- All rooms' dimensions are measured to structure elements and exclude wall finishes and construction tolerances. 2-Actual areas may vary from the scaled areas. 3-Units and gardens dimensions and drawings are approximate information may subject to change. 4-during construction works. 5-Actual units areas, front windows, porches and terraces may vary by elevations styles.

Eden Villas.

Upper Villa

Villa 1

215m²



Entrance Floor

Upper Floor

1- All rooms' dimensions are measured to structure elements and exclude wall finishes and construction tolerances. 2-Actual areas may vary from the scaled areas. 3-Units and gardens dimensions and drawings are approximate information may subject to change. 4-during construction works. 5-Actual units areas, front windows, porches and terraces may vary by elevations styles.

Eden Villas.

Upper Villa

Villa 2

215m²



Entrance Floor

Upper Floor

1- All rooms' dimensions are measured to structure elements and exclude wall finishes and construction tolerances. 2-Actual areas may vary from the scaled areas. 3-Units and gardens dimensions and drawings are approximate information may subject to change. 4-during construction works. 5-Actual units areas, front windows, porches and terraces may vary by elevations styles.

Eden Villas.

Eden Apartment

Apt. 1

250m²



/
PROTOTYPES.
Townhomes

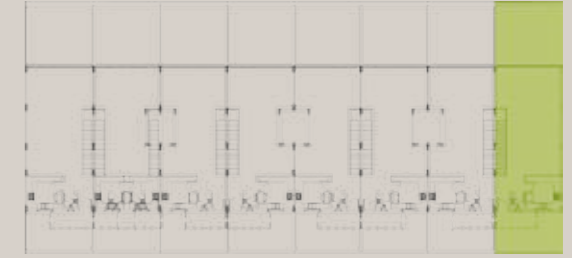




Townhomes.

Corner

Villa 1	250m ²
---------	-------------------



Ground Floor



First Floor



Roof Floor

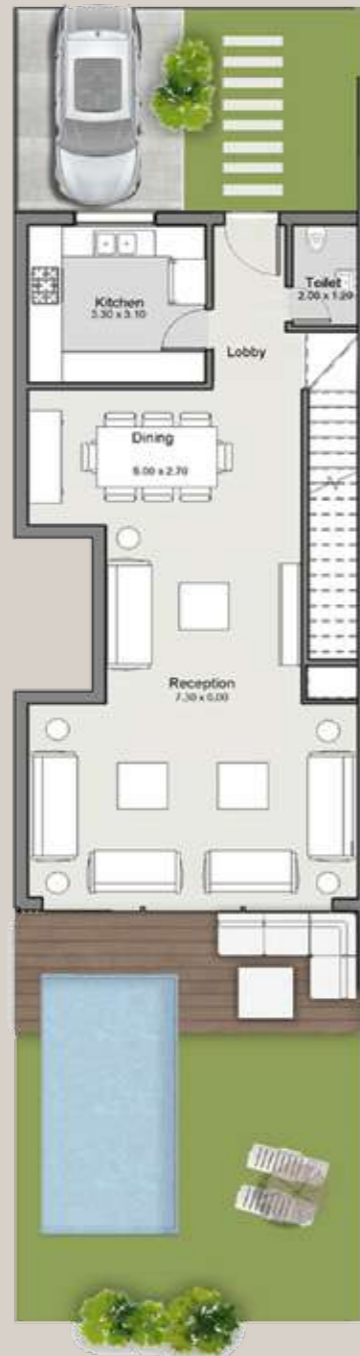
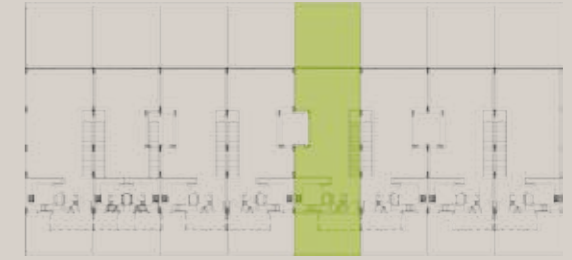
1- All rooms' dimensions are measured to structure elements and exclude wall finishes and construction tolerances. 2-Actual areas may vary from the scaled areas. 3-Units and gardens dimensions and drawings are approximate information may subject to change. 4-during construction works. 5-Actual units areas, front windows, porches and terraces may vary by elevations styles.

Townhomes.

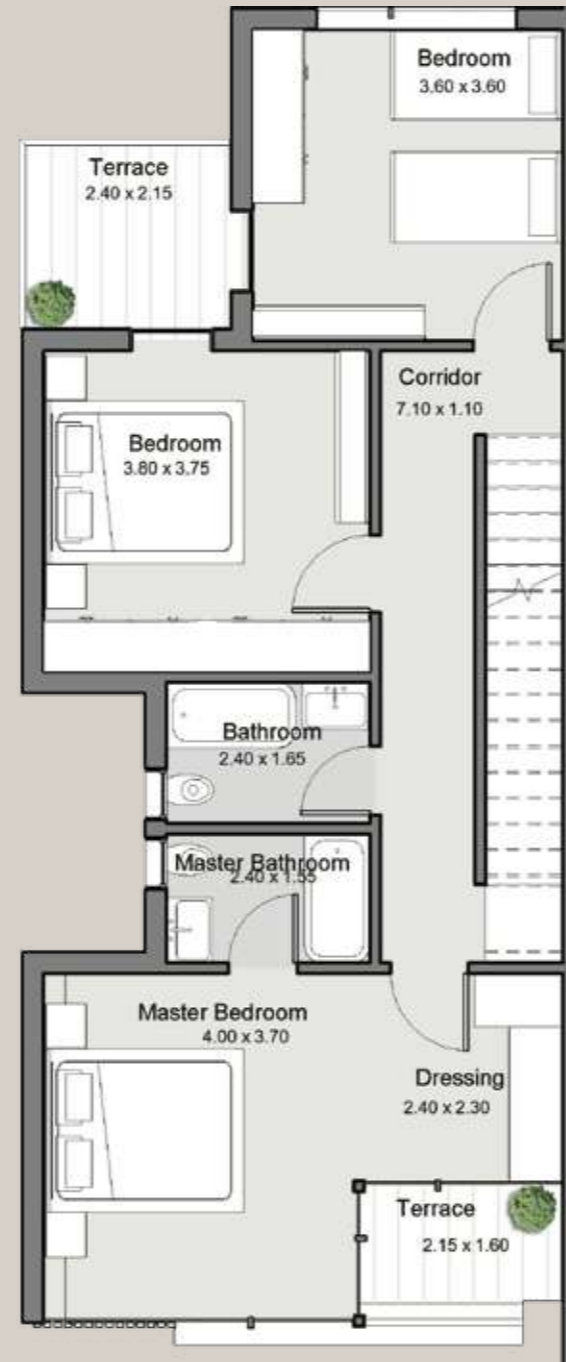
Middle

Villa 1

230m²



Ground Floor



First Floor



Roof Floor

ABOUT

EGYGAB.

Egygab was founded in 1977 with a history of building communities, working in a huge variety of fields and developing the community in every possible way. With a very rich record of establishments not only in the construction business, but also in the educational, agricultural, trade and industry businesses. Serving various sectors that include architectural design, contracting, construction management, civil planning and construction. Our main projects are The Egyptian Language School (ELS), The Canadian International College (CIC), Family City compound in New Cairo, The Fount commercial mall in New Cairo, Granda Residence, Granda Life compounds in Al Shorouk City, The Edge Medical & Retail complex and finally Masaya Sidi-Abdelrahman. Egygab has a clear vision to develop more communities that would reflect its professionalism in the market and get involved in the social progress Egypt is seeking.

Since 1977